



HEAP provides benefits to individuals and families who are having difficulty paying their utility bills. Families who are in disconnect status or who have already been disconnected may apply for the benefit.

HEAP also provides assistance to individuals and families who have less than 25% of bulk fuel supply.

Home visits may be available for homebound individuals who live alone and cannot physically leave the home (for example, elderly or severely disabled persons.).



Walk-ins are accepted Monday through Friday at 8:00 a.m.

For information available 24 hours a day, please call 513-569-1850.



Cincinnati-Hamilton County  
Community Action Agency  
Home Energy Assistance Program  
1740 Langdon Farm Road  
Cincinnati, OH 45237

[www.cincy-caa.org](http://www.cincy-caa.org)



**Cincinnati-Hamilton County  
Community Action Agency**  
*We help make things happen*



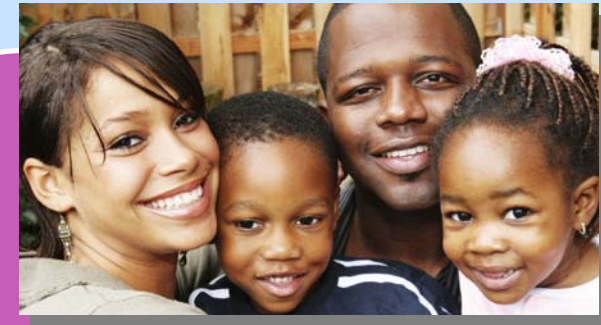
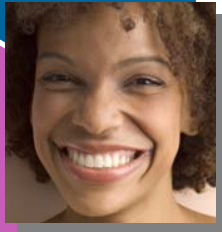
## Home Energy Assistance Program **HEAP**



**Cincinnati-Hamilton County  
Community Action Agency**

# Eligibility

To be eligible for the HEAP benefit, you must be a resident of Hamilton County and your household's gross income must be at or below 200% of the Federal Poverty Guidelines.



## Your Cincinnati-Hamilton County Community Action Agency

Please be prepared to provide the following documentation at the time of application:

- Proof of income for the past 90 days for each member of the household;
- Your most recent Duke Energy bill showing a disconnect notice;
- Social Security cards for each household member; and
- A photo ID for the head of the household (name must appear on the bill).

CAA is a nonprofit organization that has served as a lifeline for children and adults throughout Hamilton County for over forty years. The agency offers an array of services to help families improve their quality of life.

Individuals who are eligible for HEAP benefits may also qualify for other services provided by CAA.



Size of Household	Annual Income
1	\$21,660
2	\$29,140
3	\$36,620
4	\$44,100
5	\$51,580
6	\$59,060
7	\$66,540
8	\$74,020